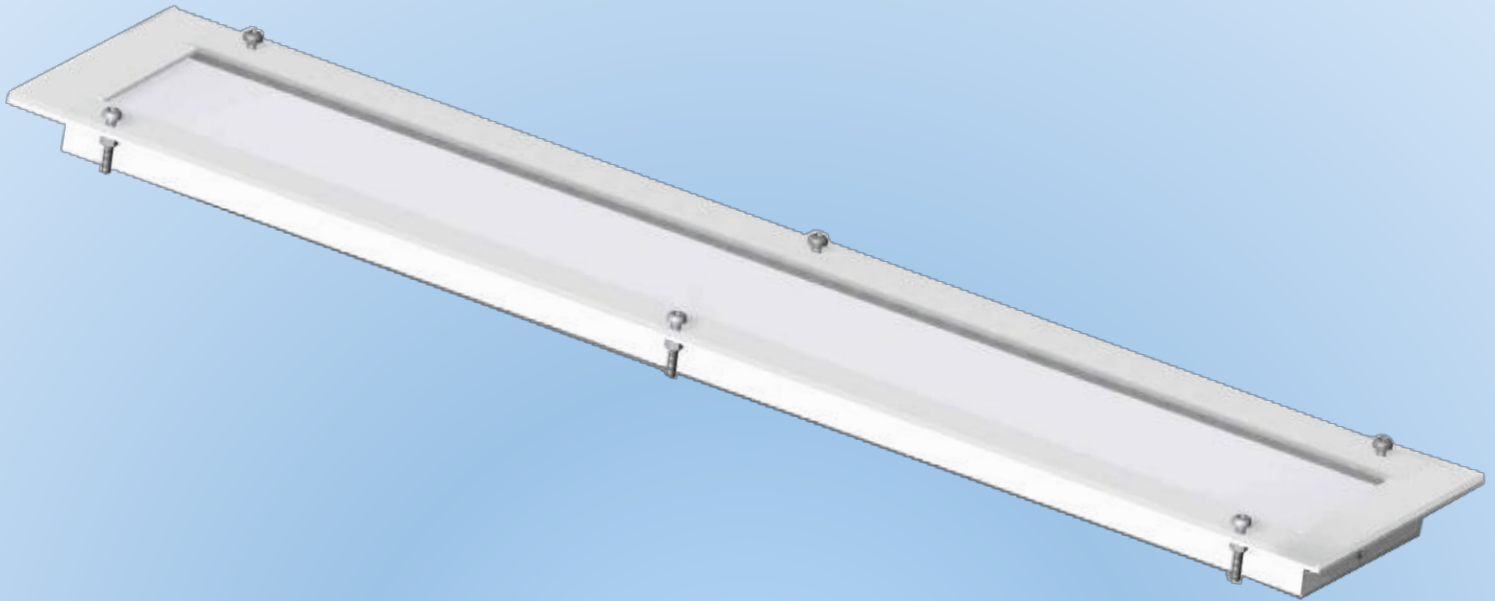


LED LAMP FOR SPRAY BOOTHS

The first and only high-tech solution



EX68.I.P

EX96.I.P

EX110.I.P

**ZONE 2
INSTALLATION AREA**

- ✓ 68W - 96W – 110W high luminous efficiency LED lamps
- ✓ 6500 K monochrome light
- ✓ Free from photobiological hazards
- ✓ Built-in aluminium structure version
- ✓ Double front protection
 - 4mm thick extra-clear tempered glass
 - 4mm thick high transparency polycarbonate
- ✓ 24VDC power supply – integrated LED driver
- ✓ 60,000 operating hours
- ✓ Saves 50% energy
- ✓ Easy to install – just 3 minutes

CCFA



TECHNICAL INFORMATION

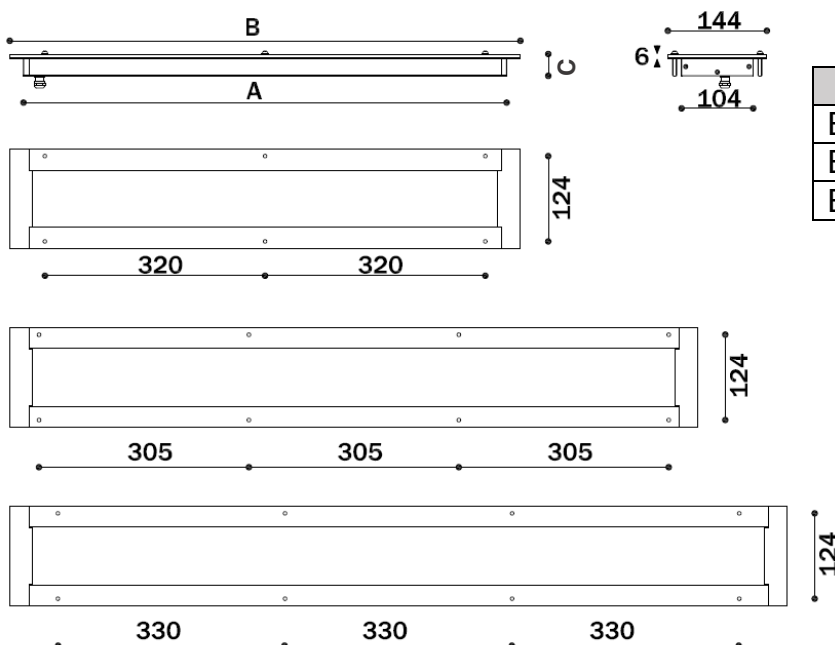
General info

Codes	Power supply	Power	Current	LED luminous flux	Light colour	Weight
EX68.I.P	24 Vdc	68 W	2.9 A	7000 lum	6500 K CRI75	3.00 Kg ~
EX96.I.P	24 Vdc	96 W	4 A	9800 lum	6500 K CRI75	4.50 Kg ~
EX110.I.P	24 Vdc	110 W	4.5 A	11200 lum	6500 K CRI75	5.00 Kg ~

Mechanical properties

Structure	Coated aluminium
4mm thick transparent PMMA prismatic	tempered glass front diffuser
Front protection	4mm thick transparent polycarbonate
Fastening	M5 screws
Cable outlet	At the base of the lamp
Lamp colour	RAL9010 (EX68 and EX96) – RAL9003 (EX110)
Shock resistance rating	IK08 with polycarbonate front
Operating temperature	Min -20°C – Max +55°C

Sizes (measurements in



Model	A mm	B mm	C mm
EX68.I.P	702	742	31
EX96.I.P	960	1000	31
EX110.I.P	1090	1130	31